

# Catálogo de las Mariposas diurnas



Reserva Mururito - Meta

# RESERVA MURURITO - Pto. Gaitán (Meta, Colombia)



*Celmia celmus*  
Lycaenidae

# MARIPOSAS DIURNAS (Papilionoidea) en la Reserva Natural Mururito (Meta - Colombia)



ACOLEP  
Asociación Colombiana  
de Lepidopterología

Fredy Montero Abril<sup>1</sup> & Maira Ortiz Perez<sup>2</sup>



N: 4° 26' 16.39'' – W: 72° 15' 07.02''.

Altitud: 155 msnm.

1,2 Investigadores Asociación Colombiana de Lepidopterología, ACOLEP, Bogotá, Colombia, email: [eurimontero@yahoo.es](mailto:eurimontero@yahoo.es); [biomayortiz@hotmail.com](mailto:biomayortiz@hotmail.com)

Abreviaturas y símbolos utilizados: Cop: copula; Ovp: Oviposición; ♂: Macho; ♀: Hembra.

Fotografías logradas en el sitio por los autores. Producido por **Fredy Montero A.**, con el apoyo para la identificación de los taxa de **Jean F. Le Crom**.

## HESPERIIDAE

- Eudaminae
- Pyrginae
- Hesperinae



1. *Chioides catillus* ♂  
Hesperiidae - Eudaminae



1. *Chioides catillus* ♂  
Hesperiidae - Eudaminae



2. *Cogia calchas* ♂  
Hesperiidae - Eudaminae



2. *Cogia calchas* ♂  
Hesperiidae - Eudaminae



3. *Urbanus dorantes dorantes* ♂  
Hesperiidae - Eudaminae



3. *Urbanus dorantes dorantes* ♂  
Hesperiidae - Eudaminae



4. *Urbanus tanna* ♂  
Hesperiidae - Eudaminae



4. *Urbanus tanna* ♂  
Hesperiidae - Eudaminae



5. *Pythonides jovianus jovianus* ♂  
Hesperiidae - Pyrginae



6. *Heliopetes arsalte* ♂  
Hesperiidae - Pyrginae



7. *Chiomara basigutta* ♂  
Hesperiidae - Pyrginae



8. *Pyrgus orcus* ♂  
Hesperiidae - Pyrginae



8. *Pyrgus orcus* ♂  
Hesperiidae - Pyrginae



9. *Calpodus ethlius* ♂  
Hesperiidae - Hesperinae



9. *Calpodus ethlius* ♂  
Hesperiidae - Hesperinae



10. *Ebusus ebusus ebusus* ♂  
Hesperiidae - Hesperinae



10. *Ebusus ebusus ebusus* ♂  
Hesperiidae - Hesperinae



12. *Talides sergestus* ♂  
Hesperiidae - Hesperinae



13. *Thracides cleantes binota* ♂  
Hesperiidae - Hesperinae



13. *Thracides cleantes binota* ♂  
Hesperiidae - Hesperinae



14. *Cocalopsis miaba* ♂  
Hesperiidae - Hesperinae



14. *Cocalopsis miaba* ♂  
Hesperiidae - Hesperinae



15. *Vettius phyllus phyllus* ♂  
Hesperiidae - Hesperinae



16. *Pompeius pompeius* ♂  
Hesperiidae - Hesperinae



16. *Pompeius pompeius* ♂  
Hesperiidae - Hesperinae



17. *Sp.*  
Hesperiidae - Hesperinae



18. *Nyctelius nyctelius* ♂  
Hesperiidae - Hesperinae



19. *Wallengrenia otho clavus* ♂  
Hesperiidae - Hesperinae



19. *Wallengrenia otho clavus* ♂  
Hesperiidae - Hesperinae



19. *Wallengrenia otho clavus* ♂  
Hesperiidae - Hesperinae



20. *Pyrrhopyge sp.* ♂  
Hesperiidae - Hesperinae



20. *Pyrrhopyge sp.* ♂  
Hesperiidae - Hesperinae



21. *Phocides distans* ♂  
Hesperiidae - Hesperinae



21. *Phocides distans* ♂  
Hesperiidae - Hesperinae

## PAPILIONIDAE

- Papilioninae



23. *Battus polydamas polydamas* ♂  
Papilionidae - Papilioninae



23. *Battus polydamas polydamas* ♂  
Papilionidae - Papilioninae

## PIERIDAE

- Coliadinae
- Pierinae



24. *Anteos menippe* ♂  
Pieridae – Coliadinae



25. *Phoebis argante larra* ♂  
Pieridae – Coliadinae



26. *Pyrisitia leuce athalia* ♂  
Pieridae – Coliadinae



26. *Pyrisitia leuce athalia* ♂  
Pieridae – Coliadinae

# NYMPHALIDAE

- Heliconiinae
- Danainae
- Satyrinae
- Limenitidinae
- Charaxinae
- Nymphalinae
- Biblidinae



28. *Euptoieta hegesia* ♂  
Nymphalidae – Heliconiinae



29. *Dryas iulia iulia* COP.  
Nymphalidae – Heliconiinae



29. *Dryas iulia iulia* ♂  
Nymphalidae – Heliconiinae



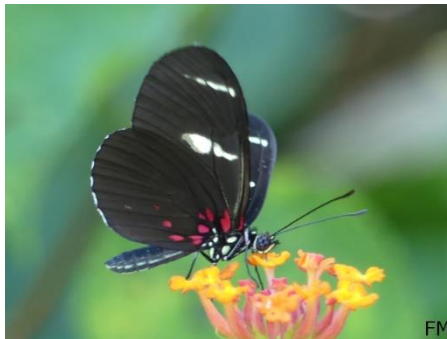
29. *Dryas iulia iulia* ♂  
Nymphalidae – Heliconiinae



30. *Heliconius erato hydara* ♂  
Nymphalidae – Heliconiinae



30. *Heliconius erato hydara* ♂  
Nymphalidae – Heliconiinae



31. *Heliconius sara* ♂  
Nymphalidae – Heliconiinae



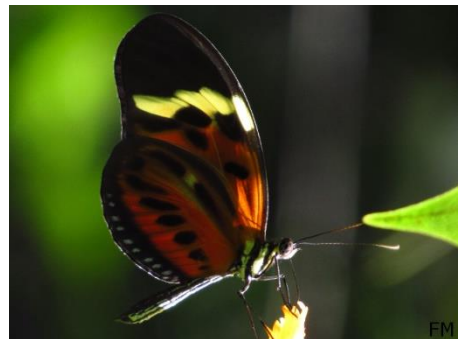
31. *Heliconius sara* ♂  
Nymphalidae – Heliconiinae



31. *Heliconius sara* ♂  
Nymphalidae – Heliconiinae



31. *Heliconius sara* ♂  
Nymphalidae – Heliconiinae



32. *Heliconus numata* spp. ♂  
Nymphalidae – Heliconiinae



33. *Heliconus numata* spp. ♂  
Nymphalidae – Heliconinae



33. *Heliconus numata* spp. ♂  
Nymphalidae – Heliconinae



34. *Philaethria pygmalion* ♂  
Nymphalidae – Heliconinae



34. *Philaethria pygmalion* ♂  
Nymphalidae – Heliconinae



34. *Philaethria pygmalion* ♂  
Nymphalidae – Heliconinae



35. *Colobura dirce* ♂  
Nymphalidae – Nymphalinae



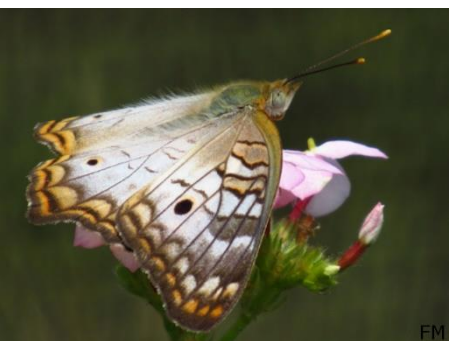
36. *Anartia amathea* ♂  
Nymphalidae – Nymphalinae



36. *Anartia amathea* ♂  
Nymphalidae – Nymphalinae



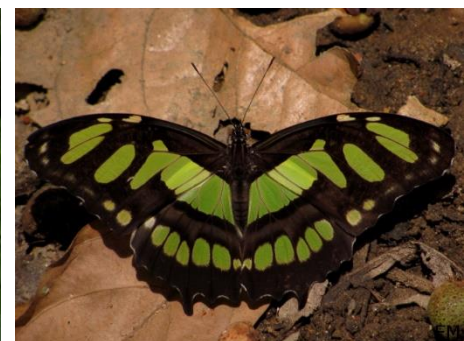
37. *Anartia jatrophae* ♂  
Nymphalidae – Nymphalinae



37. *Anartia jatrophae* ♂  
Nymphalidae – Nymphalinae



38. *Siproeta stelenes* ♂  
Nymphalidae – Nymphalinae



38. *Siproeta stelenes* ♂  
Nymphalidae – Nymphalinae



39. *Junonia genoveva* ♂  
Nymphalidae – Nymphalinae



39. *Junonia genoveva* ♂  
Nymphalidae – Nymphalinae



40. *Adelpha cytherea cytherea* ♂  
Nymphalidae – Limenitidinae



40. *Adelpha cytherea cytherea* ♂  
Nymphalidae – Limenitidinae



40. *Adelpha cytherea cytherea* ♂  
Nymphalidae – Limenitidinae



41. *Adelpha plesasure phliassa* ♂  
Nymphalidae – Limenitidinae



41. *Adelpha plesasure phliassa* ♂  
Nymphalidae – Limenitidinae



41. *Adelpha plesasure phliassa* ♂  
Nymphalidae – Limenitidinae



42. *Prepona amesia* ♂  
Nymphalidae – Charaxinae



42. *Prepona amesia* ♂  
Nymphalidae – Charaxinae



43. *Archaeoprepona demophon* ♂  
Nymphalidae – Charaxinae



44. *Siderone galanthis thebais* ♂  
Nymphalidae – Charaxinae



45. *Zaretis isidora* ♀  
Nymphalidae – Charaxinae



45. *Zaretis itys itys* ♂  
Nymphalidae – Charaxinae



46. *Morpho helenor ululina* ♂  
Nymphalidae – Satyrinae



47. *Catoblepia berecynthia midas* ♂  
Nymphalidae – Satyrinae



48. *Opsiphanes cassiae* ♂  
Nymphalidae – Satyrinae



48. *Opsiphanes cassiae* ♂  
Nymphalidae – Satyrinae



49. *Hermeuptychia hermes* ♂  
Nymphalidae – Satyrinae



49. *Hermeuptychia hermes* ♂  
Nymphalidae – Satyrinae



49. *Hermeuptychia hermes* ♂  
Nymphalidae – Satyrinae



50. *Magneuptychia harpya batesii* ♂  
Nymphalidae – Satyrinae



51. *Magneuptychia lybia* ♂  
Nymphalidae – Satyrinae



52. *Pareuptychia ocirrhoe* ♂  
Nymphalidae – Satyrinae



53. *Taygetis laches* ♂  
Nymphalidae – Satyrinae



53. *Taygetis laches* ♂  
Nymphalidae – Satyrinae



54. *Taygetis* sp. ♂  
Nymphalidae – Satyrinae



55. *Taygetis kerea* ♂  
Nymphalidae – Satyrinae



56. *Catonephele antinoe* ♂  
Nymphalidae – Biblidinae



56. *Catonephele antinoe* ♂  
Nymphalidae – Biblidinae



56. *Catonephele antinoe* ♂  
Nymphalidae – Biblidinae



57. *Eunica alpais alpais* ♂  
Nymphalidae – Biblidinae



58. *Eunica anna* ♂  
Nymphalidae – Biblidinae



58. *Eunica anna* ♂  
Nymphalidae – Biblidinae



59. *Temenis laothoe columbiana* ♂  
Nymphalidae – Biblidinae

# LYCAENIDAE

- Theclinae
- Polyommatainae



61. *Calycopis isobeon* ♀  
Lycaenidae – Theclinae



61. *Calycopis isobeon* ♀  
Lycaenidae – Theclinae



61. *Calycopis isobeon* ♀  
Lycaenidae – Theclinae



61. *Calycopis isobeon* ♀  
Lycaenidae – Theclinae



61. *Calycopis isobeon* ♀  
Lycaenidae – Theclinae



62. *Panthiades bitias* ♂  
Lycaenidae – Theclinae



63. *Strephonota parvipuncta* ♂  
Lycaenidae – Theclinae



64. *Celmia celmus* ♂  
Lycaenidae – Theclinae



64. *Celmia celmus* ♂  
Lycaenidae – Theclinae



65. *Panthiades aeolus* ♂  
Lycaenidae – Theclinae



65. *Panthiades aeolus* ♂  
Lycaenidae – Theclinae



66. *Enos myrtea* ♂  
Lycaenidae – Theclinae



67. *Pseudolycaena damo* ♂  
Lycaenidae – Theclinae

## RIODINIDAE

- Riodininae
- Euselasinae



69. *Mesosemia philocles egabella* ♂  
Riodinidae – Riodininae



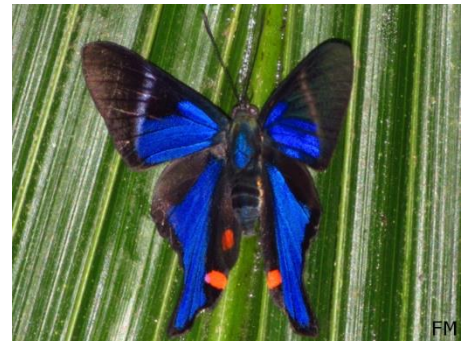
70. *Mesosemia thymetus* ♂  
Riodinidae – Riodininae



71. *Perophtalma tullius* COP.  
Riodinidae – Riodininae



72. *Calydna candace* ♀  
Riodinidae – Riodininae



73. *Rhetus periander* ♂  
Riodinidae – Riodininae



73. *Rhetus periander* ♂  
Riodinidae – Riodininae



74. *Juditha azan* ♂  
Riodinidae – Riodininae



74. *Juditha azan* ♂  
Riodinidae – Riodininae



75. *Stalachtis calliope* ♂  
Riodinidae – Riodininae



75. *Stalachtis calliope* ♂  
Riodinidae – Riodininae



76. *Theope leucanthe* ♂  
Riodinidae – Riodininae



77. *Chalodeta chlosine* ♂  
Riodinidae – Riodininae



78. *Euselasia cafusa* ♂  
Nymphalidae – Euselasiinae



78. *Euselasia cafusa* ♂  
Riodinidae – Euselasiinae



79. *Euselasia euryone* ♂  
Riodinidae – Euselasiinae



79. *Euselasia euryone* ♂  
Riodinidae – Euselasiinae



79. *Euselasia euryone* ♂  
Riodinidae – Euselasiinae